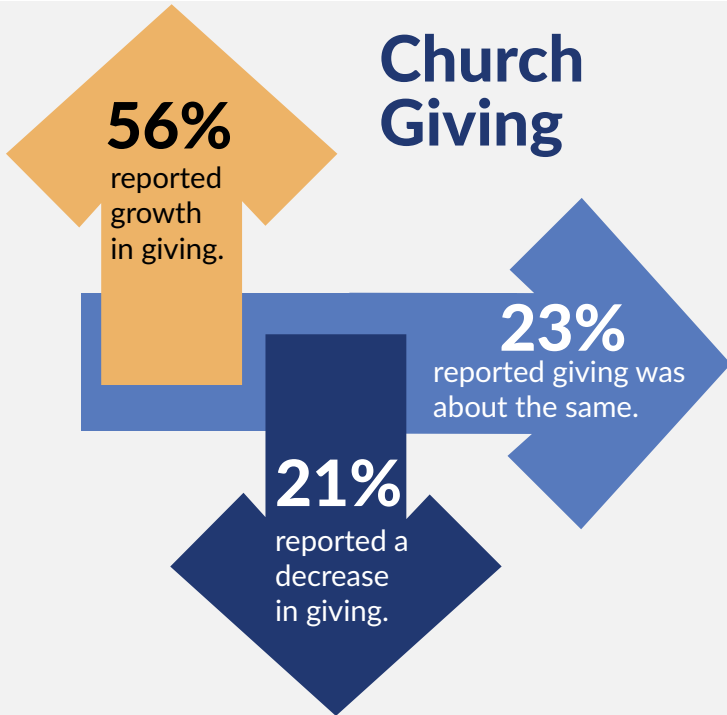


# Giving and Worship Report

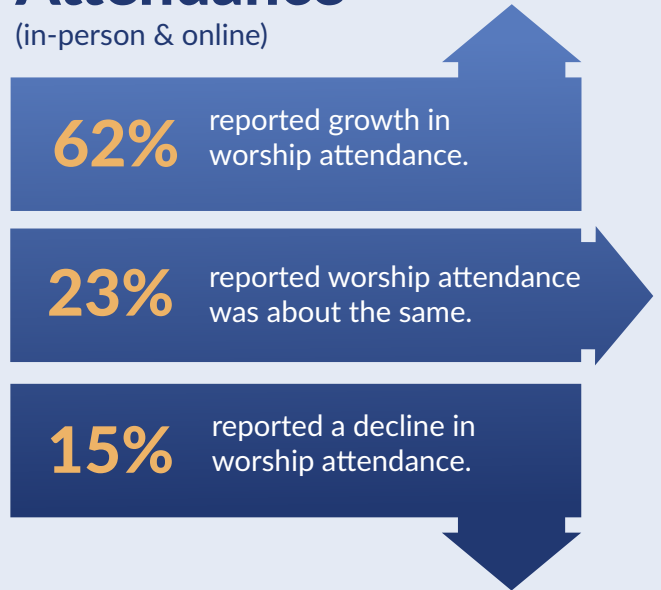
## Key Findings from 2023

### Church Giving



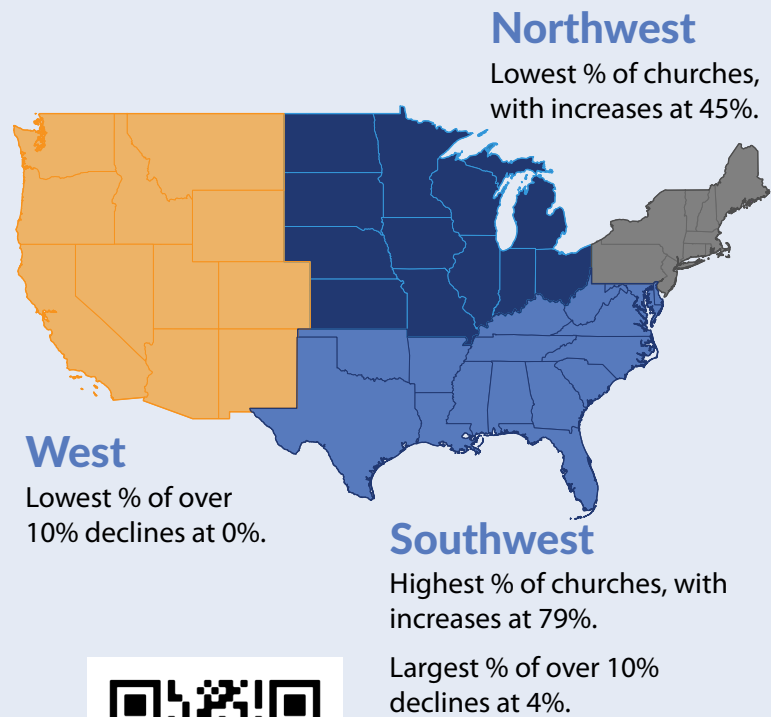
### Church Worship Attendance

(in-person & online)



### Changes in Worship Attendance by Annual Ministry Budget

Over \$5mm	82%	6%
\$1mm to \$4.9mm	74%	13%
\$500,000 to \$999,999	68%	11%
\$100,000 to \$499,999	54%	16%
Under \$100k	32%	29%



Scan to download the full report.